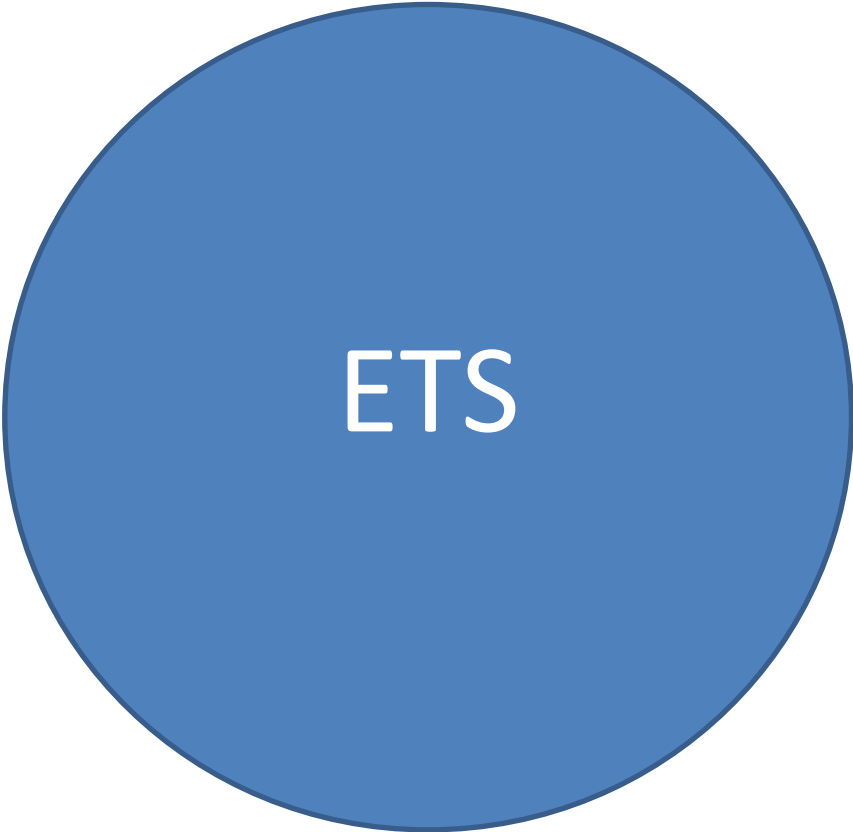
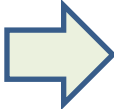


The Future of Agriculture – Policy and Research Implications

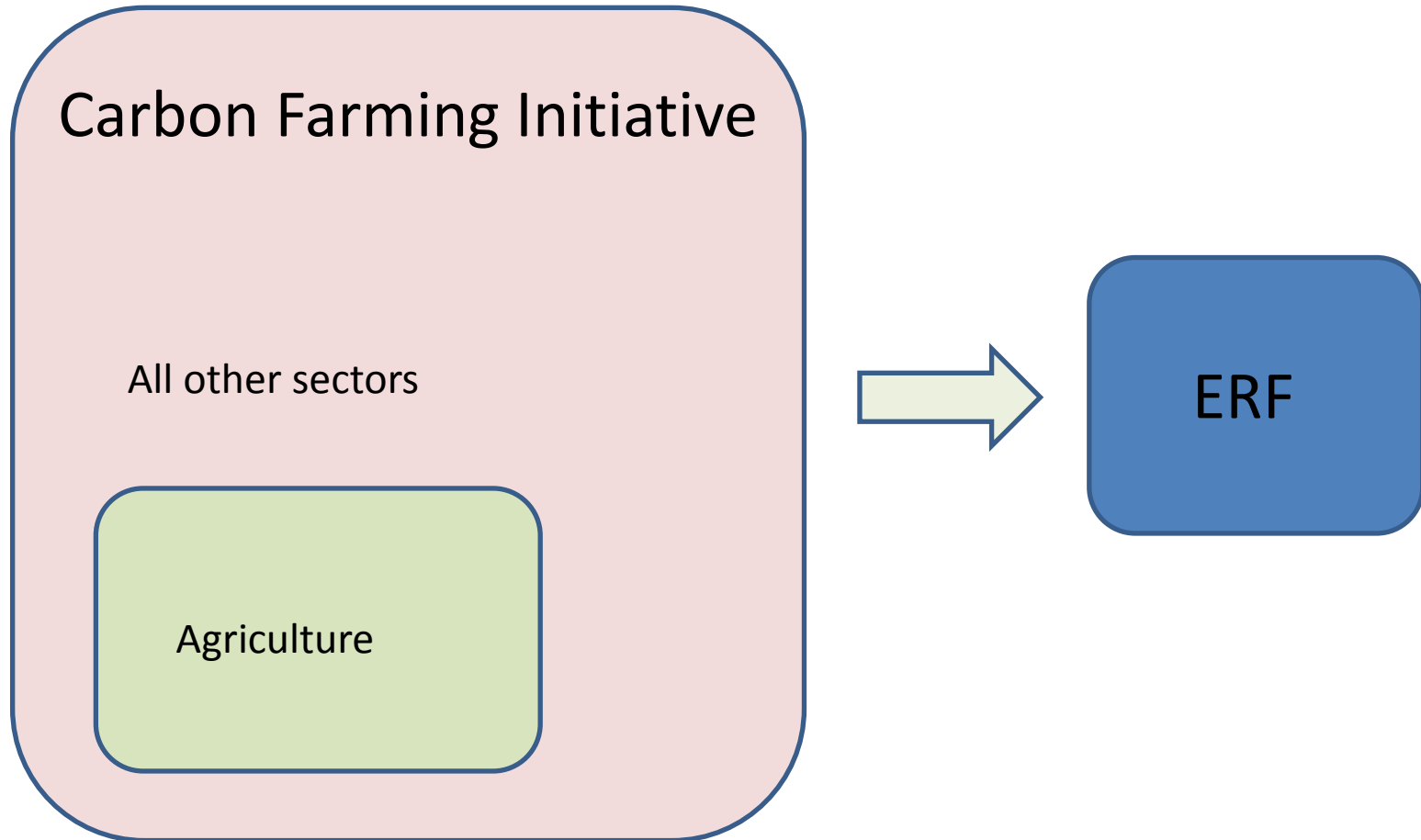
Using technology to measure soil
carbon for the Carbon Farming
Initiative

Carbon Farming Initiative (original)

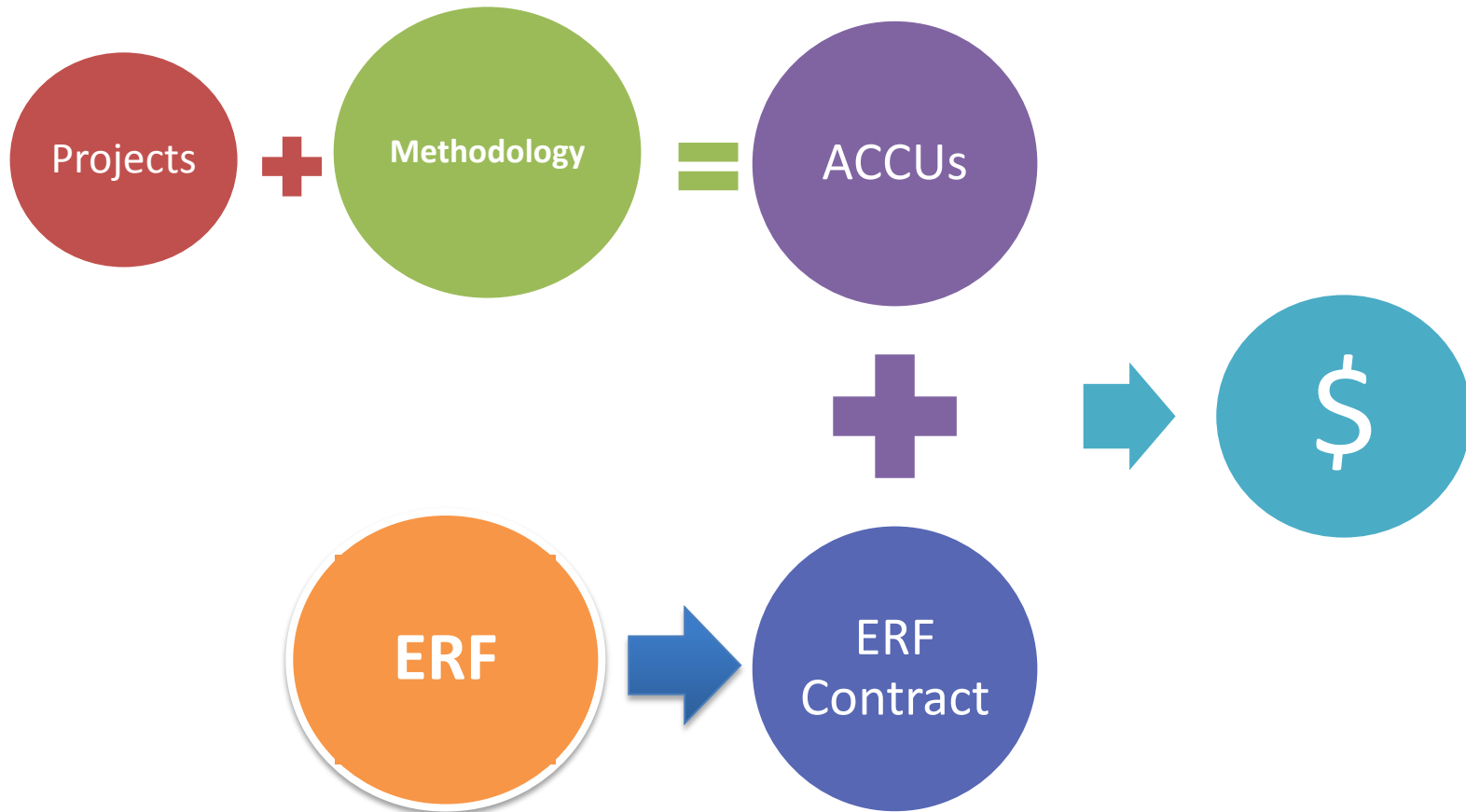
Carbon Farming Initiative
(agriculture)



Carbon Farming Initiative (now)

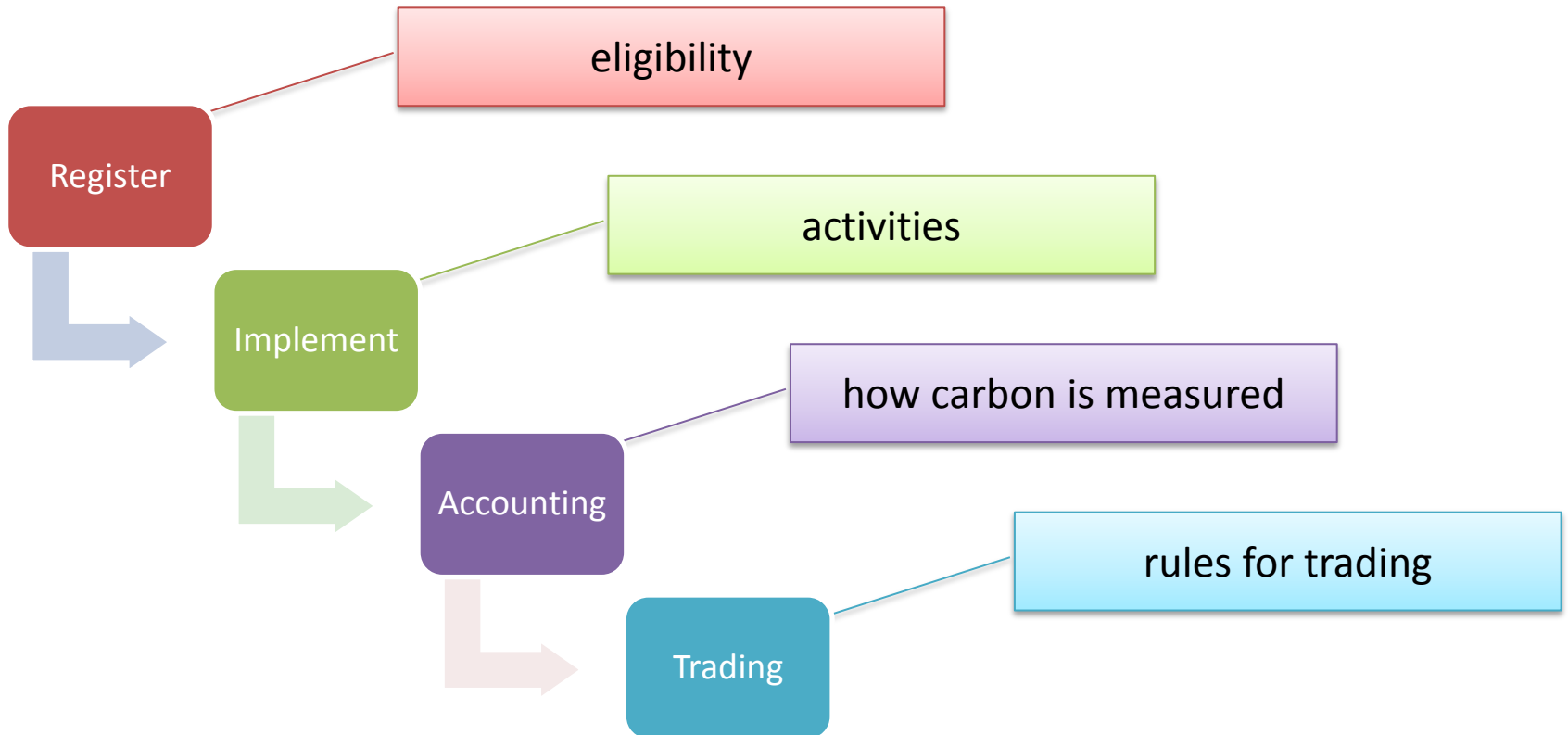


How does it work



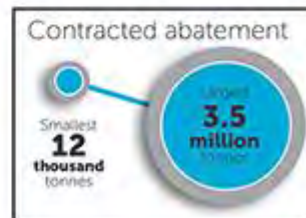
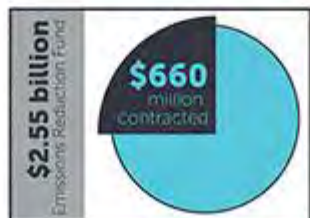
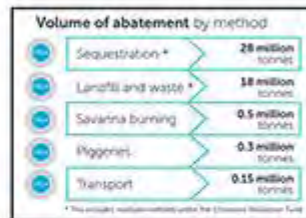
Methodologies

(Sequestration of Carbon in Soil in Grazing Systems)

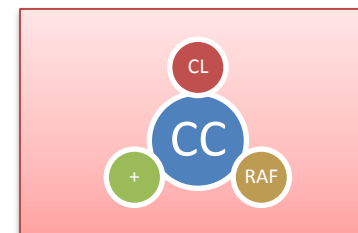


This is actually happening

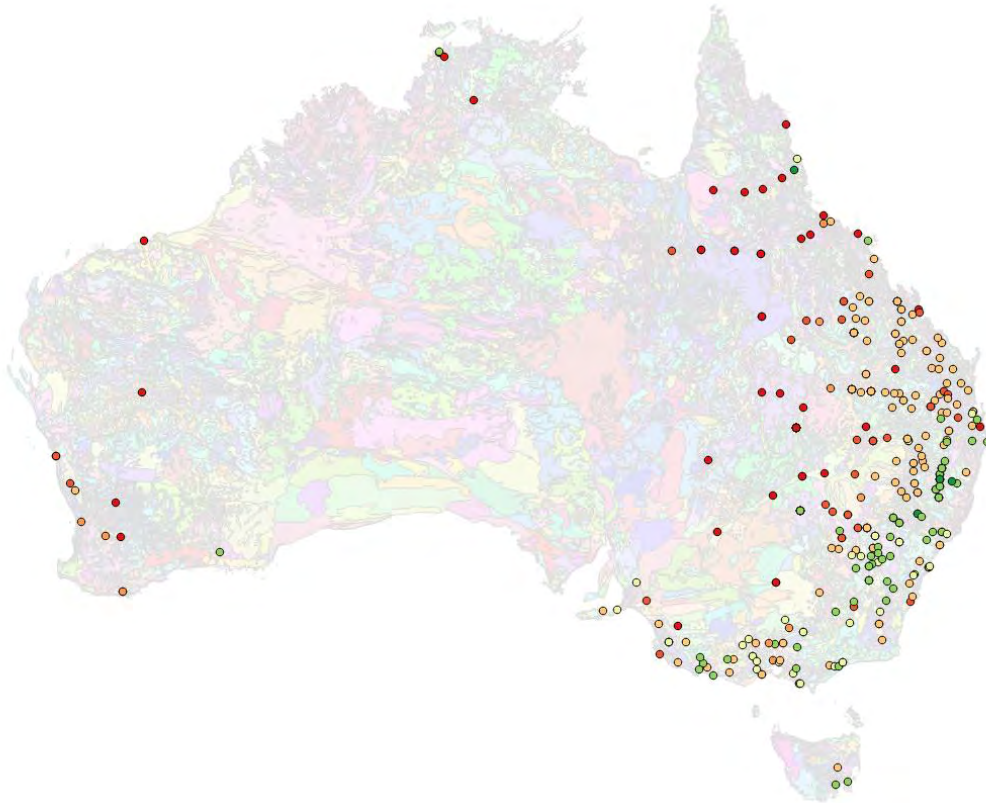
Emissions Reduction Fund 15 - 16 April 2015 Auction Results Released 23 April 2015



3.4 Mt CO₂-e
Soil Carbon



Who's interested

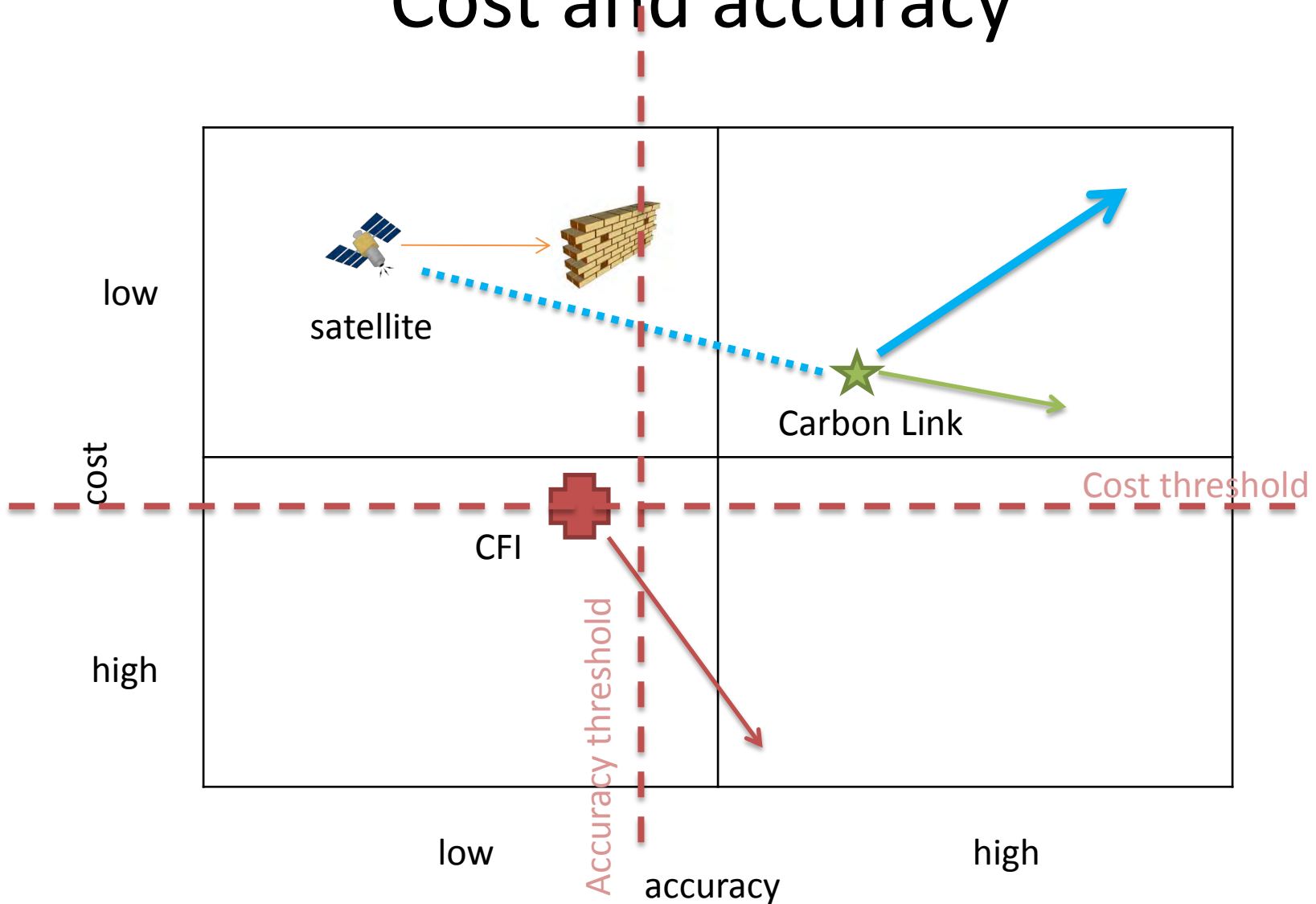


Farms 350+

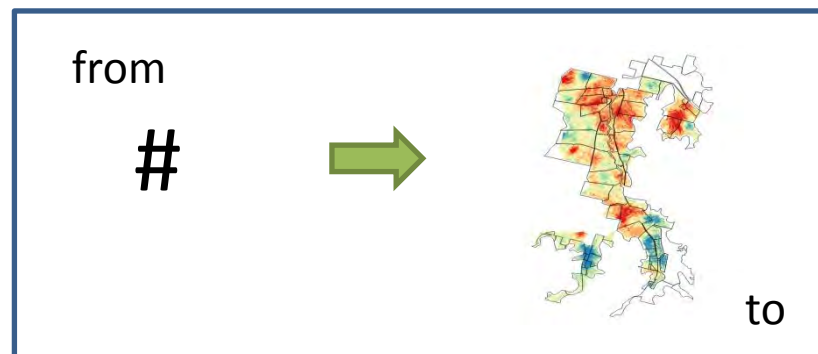
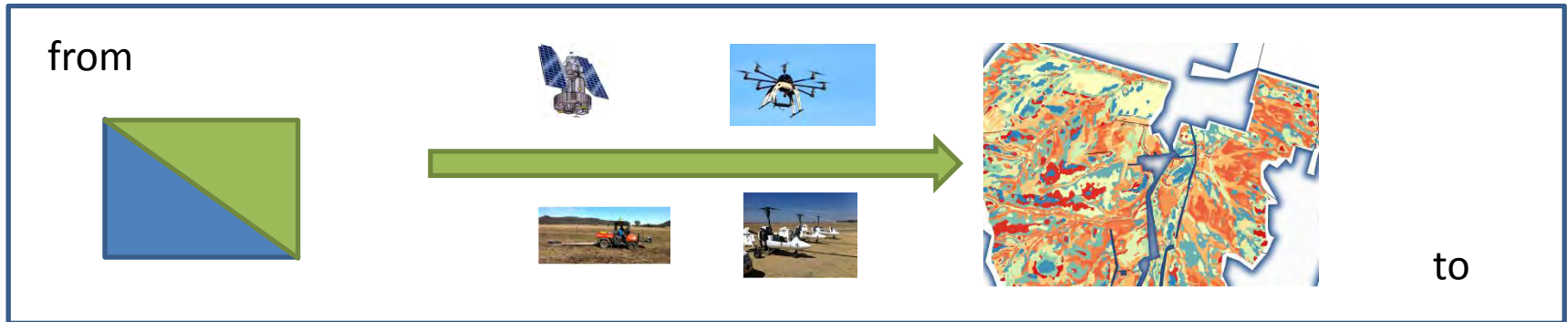
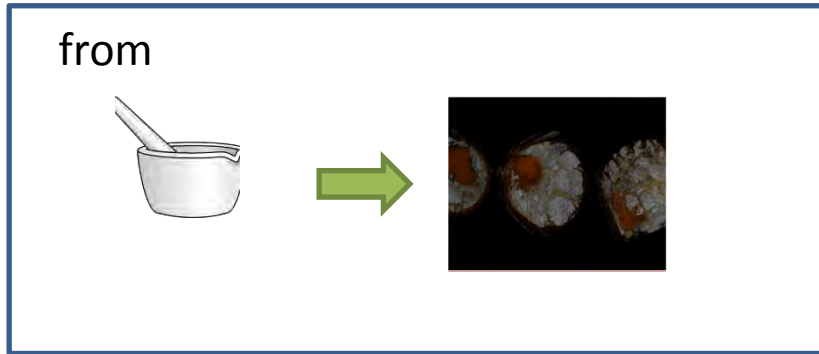
Hectares 3.8 M+

tCO₂-e/y 1M+

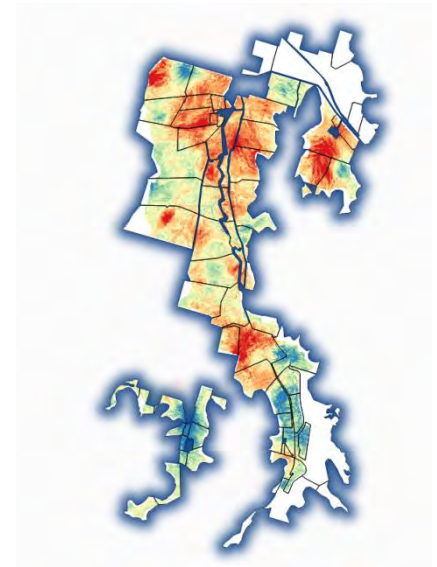
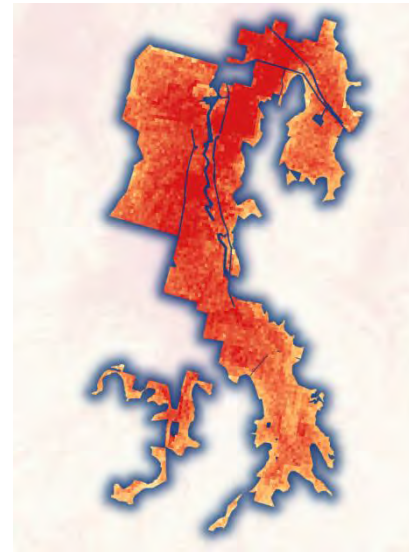
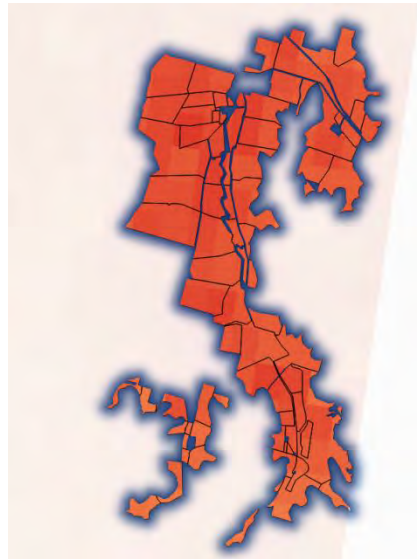
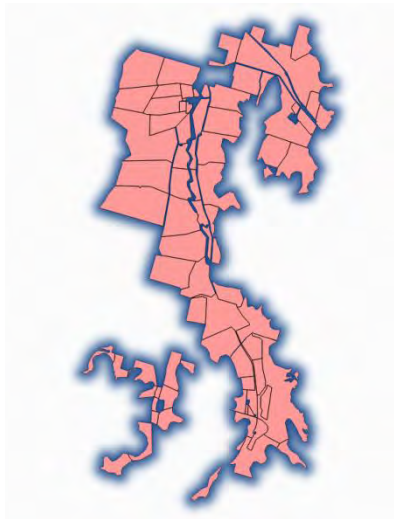
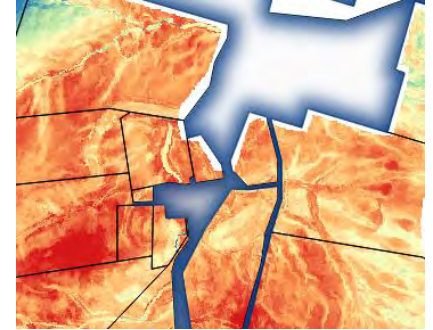
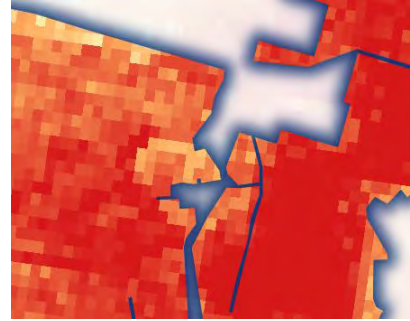
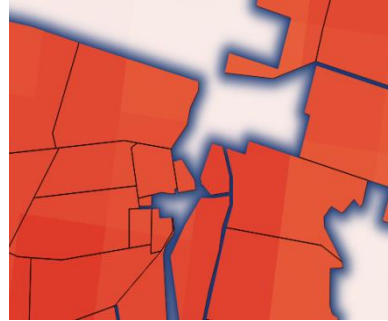
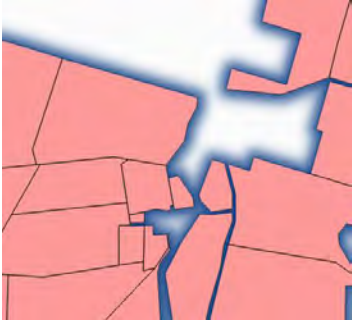
Measurement Cost and accuracy



Carbon Link's approach to soil carbon measurement



Comparisons of measurement approaches



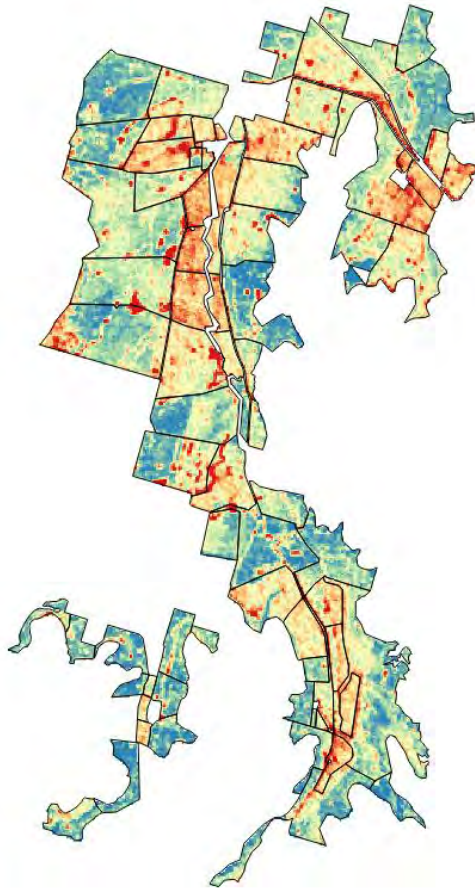
CFI

Satellite

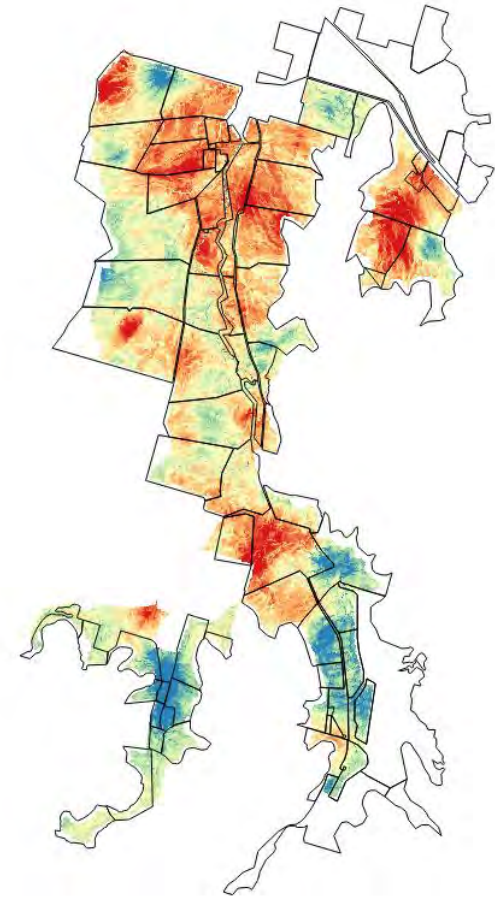
Satellite latest

What's possible

A taste of what is coming



% bare ground 1987 to present



SOC